



## Replacement Parts Catalog



This catalog contains information on the replacement part kits available from Werner Co. These kits are made to OEM quality standards and contain complete detailed installation instructions. If required all kits include the needed fasteners.

If a Kit Model # is listed, then there is only one kit available. If **NO** Kit Model # is listed, then several different kits are available based on the ladder "Model" and "Mark" numbers. Please see the next page to see how to determine your ladder "Model" and "Mark" numbers. Replacement part kits are **NOT** available for all ladder models.

### **HOW CAN I REPAIR MY DAMAGED LADDER OR DOES WERNER CO. OFFER A LADDER REPAIR SERVICE?**

Werner Co. does not recommend repairing a damaged ladder and does not offer a repair service through the company.

### **CAN I PURCHASE A REPLACEMENT SECTION FOR MY EXTENSION LADDER?**

For safety reasons, Werner Co. does not offer replacement of the individual sections of an extension ladder.

Werner Co. offers replacement parts such as Extension Ladder Shoes, Lock Assemblies, Flippers, Springs and Pulleys, Stepladder Feet and Attic Ladder Mechanisms for sale for a period of 15 years from date of manufacture of your product. All other available component replacement parts are offered for sale for a period of 5 years from date of manufacture.



# Replacement Parts Catalog

## Identifying your Ladder Model and “Mark” numbers

**WERNER**

★★★★★  
**300** lbs. LOAD CAPACITY  
Includes User and Materials  
136 kg CAPACIDAD DE CARGA  
Incluye el Usuario y los Materiales  
EXTRA HEAVY DUTY  
SERVIDO EXTRA PESADO  
TYPE IA  
TIPO IA

**Ladder Size**  
Tamaño de la escalera **4'**  
1.22m

**Maximum Reach\***  
Alcance máximo\* **8'**  
2.44m

**Highest Standing Level**  
El nivel más alto para colocarse de pie **1'11"**  
0.58m

**Model Number**  
Número de modelo **FTP6204**  
**MK 3**

\* Assumes a 5'6" person with a vertical 12" reach  
\* Se asume una persona con altura de 1.68m con un alcance vertical de 0.30m

**Non-Conductive Fiberglass Side Rails**  
Rieles Laterales de Fibra de Vidrio  
No-Conductores de la Electricidad

100515

P/N100515-210 Rev F 8/08  
©2008 Werner Co.  
Greenville, PA 16125  
Assembled in U.S.A.

**ANSI A14.5**  
**OSHA**  
COMPLIANCE IN  
SERVICIOS INDUSTRIALES

0 51751 06470 4

**For ladders manufactured after 2001:** Locate your ID Label to identify your model and mark numbers as show in the illustration. On an attic ladder, if you don't find a label that includes a mark (MK) number and a label or ink stamp indicates that ladder was manufactured by Kentucky Ladder or Werner Ladder use **3** as your mark number. Please note: this can **only** be applied to attic ladders.



**For ladders manufactured before 2001:** Locate the Code Stamp to determine the mark (MK) number.

Fiberglass Stepladders – code stamp is on the underside of the bottom step

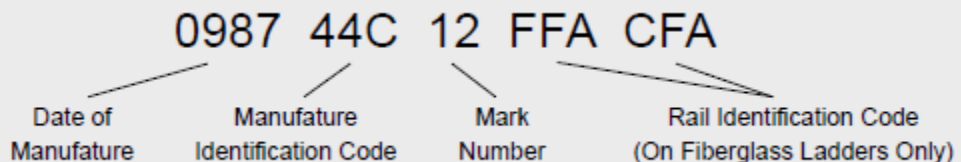
Fiberglass Extension Ladders – code stamp is on the outside of the aluminum rail shield at the foot of the ladder

Aluminum Stepladders – code stamp is located under the bottom step or on the inside of either side rail below the bottom step

Aluminum Extension Ladders – code stamp is located within 4 feet from the bottom on either the base or fly section.

Once you have located the code stamp, determine your mark number, it will be the first two digits following the first letter as shown.

**Code Stamp**  
**Example:**





# Fiberglass Stepladders



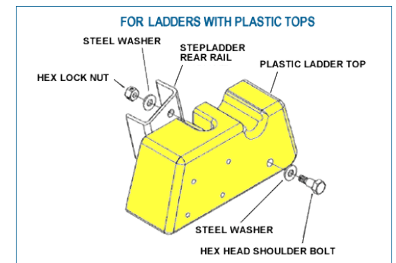
Spreader  
Kits

Replacement  
Top  
Kits



Replacement  
Feet  
Kits

Rear Pivot  
Hardware  
Kits



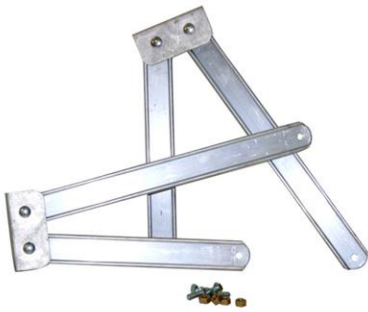
Replacement  
Label  
Kits

Fiberglass  
Rail Shield  
Kits





# Aluminum Stepladders



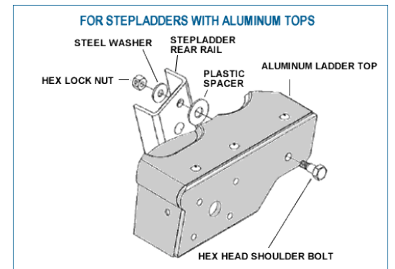
Spreader  
Kits



Replacement  
Top  
Kits



Replacement  
Feet  
Kits



Rear Pivot  
Hardware  
Kits



Replacement  
Label  
Kits





# Stockr's Ladders



Black Filler Kits

Replacement Caster & Bracket Kits



Top Bar Kits

Replacement Caster Kits



Replacement Label Kits



Replacement Caster Spring Kits





## Extension Ladders

Rung  
Replacement  
Kits



Foot Bracket  
Replacement  
Kits



Rung  
Wear Sleeve  
Kits



Safety Shoe  
Replacement  
Kits



Pulley  
Replacement  
Kits



Rope  
Replacement  
Kits





## Extension Ladders



End Cap Replacement Kits

Rung Lock Replacement Kits



Guide Bracket Replacement Kits

Lock Flipper Replacement Kits



Replacement Label Kits

Lock Spring Replacement Kits





## MT Series Ladders



Dynamic  
Hinge  
Kit Model #36-28

Inner Lock  
Replacement  
Kit Model #36-32



Foot  
Replacement  
Kit Model #21-28

J-Lock  
Replacement  
Kit



Soft-Touch Knob  
Replacement  
Kit Model #36-31





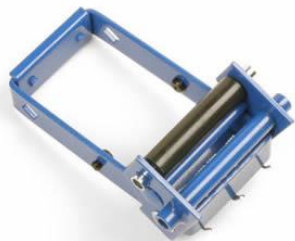


## Aluminum Pump Jacks



Upper Shackle  
Replacement  
Kit Model #52-1

Lower Foot  
Lever  
Replacement  
Kit Model #52-4



Lower Shackle  
Replacement  
Kit Model #52-2

Boot Strap  
Replacement  
Kit Model #52-5



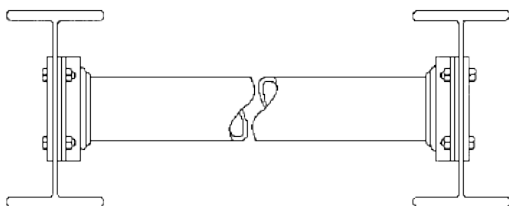
Crank Handle  
Replacement  
Kit Model #52-3

Pole Foot  
Replacement  
Kit Model #52-6



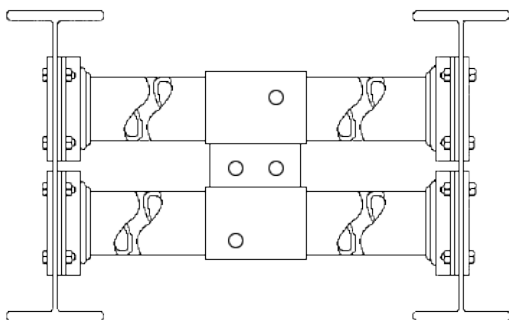


## Aluminum Stages



Single Rung  
Replacement  
Kits

Handle  
Replacement  
Kits



Double Rung  
Replacement  
Kits

Nestable Stage  
Handle  
Replacement  
Kits

