

# Workmaster™

## Super Duty

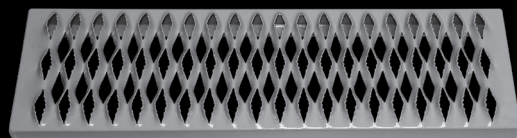
Rolling Steel Ladder

PATENTED Pat. # US 9,206,643 B2

### SPECIFICATIONS & DIMENSIONS

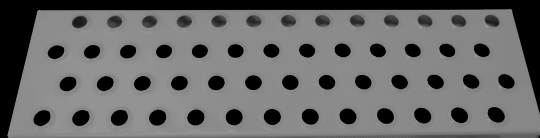
DESCRIPTION	TOP STEP HEIGHT	OVERALL HEIGHT	WORKING HEIGHT (APPROX.)	SERRATED TREAD			PERFORATED GRIP TREAD				
				MODEL NUMBER	BASE WIDTH	BASE LENGTH	SHP. WT. LBS.	MODEL NUMBER	BASE WIDTH	BASE LENGTH	SHP. WT. LBS.
5 STEP WITH HANDRAILS	50"	92"	116"	WMX05R37A3P3	37"	56"	380	WMX05R37A6P3	37"	56"	380
6 STEP WITH HANDRAILS	60"	102"	126"	WMX06R37A3P3	37"	62"	428	WMX06R37A6P3	37"	62"	430
7 STEP WITH HANDRAILS	70"	112"	136"	WMX07R37A3P3	37"	68"	457	WMX07R37A6P3	37"	68"	457
8 STEP WITH HANDRAILS	80"	122"	146"	WMX08R37A3P3	37"	74"	433	WMX08R37A6P3	37"	74"	449
9 STEP WITH HANDRAILS	90"	132"	156"	WMX09R37A3P3	37"	80"	511	WMX09R37A6P3	37"	80"	511
10 STEP WITH HANDRAILS	100"	142"	166"	WMX10R37A3P3	37"	86"	530	WMX10R37A6P3	37"	86"	530
11 STEP WITH HANDRAILS	110"	152"	176"	WMX11R42A3P3	42"	92"	555	WMX11R42A6P3	42"	92"	555
12 STEP WITH HANDRAILS	120"	162"	186"	WMX12R42A3P3	42"	98"	596	WMX12R42A6P3	42"	98"	596

### TREAD OPTIONS



#### SERRATED TREAD (A3)

Open step Premium Serrated Tread. For rugged applications.



#### PERFORATED TREAD (A6)

Perforated holes provide excellent slip resistance.

Platform safety gate (factory or field installed) available for all 4 sides of platform.

# Cotterman®

## NationalLadder.com

### Call Today: 888-725-5995

Quality Product | Outstanding Customer Services | Attention to Details

© 2019 Material Control, Inc.

# Cotterman®

SD-103  
5-19

## Workmaster™ Super Duty

Rolling Steel Ladder

For the workspace that demands the toughest ladder, the Super Duty Workmaster™ ladder.



## NationalLadder.com

### Call Today: 888-725-5995

Quality Product | Outstanding Customer Services | Attention to Details

PATENTED Pat. # US 9,206,643 B2

Every day work is done where equipment needs to be able to take a beating and keep working. For the toughest jobs, choose the Cotterman® Super Duty Workmaster™ ladder. Built with extra heavy duty components, this ladder is resistant to all the dings and bumps in harsh work environments.

The Workmaster™ is also customizable with an array of features and options to adapt the ladder to specific work areas.

Essentially the Workmaster™ Super Duty Ladder can become a mobile assembly or repair shop for anything out of reach.

Two tone powder coat finish creates high visibility and can be ordered in an array of different colors.

**For the toughest work areas, step up to the Cotterman® Workmaster™ Super Duty Rolling Steel Ladder.**



### OPTIONAL FRONT SELF-CLOSING GATE

Self-Closing Safety Gates keep personnel fully enclosed and safe. Safety gates are available on either the front or rear of the Workmaster™ Ladder.



**Also Available**  
**OPTIONAL REAR SELF-CLOSING GATE**  
SIDE EXIT SELF-CLOSING GATES AVAILABLE AS WELL



### 1.5" POWDER COATED TUBE HANDRAILS

For added stability and durability. 1.5" x 14 gauge steel handrails provide a sturdy, safe support while ascending or descending the Workmaster™ Super Duty Rolling Ladder.



### 7" x 10 gauge Stair Stringer

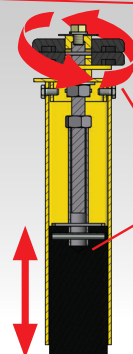
Provides an extra durable surface. Resistant to dents, dings and bending. Drastically increases overall work load and life of the Workmaster™ Super Duty Ladder.

### Modular Front Leg and SafeLock



Field Replaceable, Adjustable Front Legs that level the Ladder

**Replaceable, Adjustable Front Legs Level the Ladder**



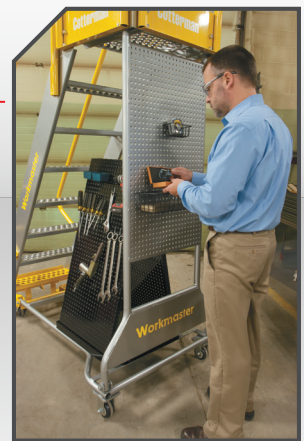
Easily adjust Rubber Foot Pad to level the ladder or compensate for wear  
**2" x 2" x 5" Adjustable Rubber Foot Pad**



**24" X 24" PLATFORM** (serrated tread shown) WITH STANDARD TOEBOARDS AND 42" GUARDRAILS

- 1,000 lb. load rating.
- 59° climb angle.
- 1½" diameter x 14 gauge tube construction.
- 24" x 24" platform with optional self-closing gates (available for all 4 sides of platform).
- Adjustable front legs level the ladder.
- Two-tone powder coat finish creates high visibility.
- Standard back peg board.
- Workmaster™ Super Duty ladders meet applicable OSHA and ANSI standards.

**STANDARD BACK TOOL BOARD**



**HEAVY DUTY CASTERS** CURVED BASE AND BACK PANEL AND BOLT LOCATION FOR EASY ASSEMBLY

