

New!

Vi-Go™

Ladder Climbing Safety Systems

**Continuous fall protection
when climbing fixed ladders**

- Do-it-yourself kits for easy installation & inspection
- Easy one-hand attachment/detachment
- Select *Automatic* or *Manual* climbing design options
- Build your own system
– Cut cable lengths on site for greater versatility



MILLER®

by Honeywell

New!

Vi-Go™ Ladder Climbing Safety Systems

New Vi-Go™ Ladder Climbing Safety Systems provide the ultimate in safety with continuous fall protection when climbing fixed ladders. Systems are available in easy-to-install kits or as a *build your own* option.

Vi-Go Ladder Climbing Safety Systems offer many unique advantages:

- **Lower cost of ownership** – Do-it-yourself kits for easy installation and inspection. No costly, annual manufacturer inspections often required by other systems.
- **Option to cut cable lengths on site** for greater versatility.
- **Accommodate up to four (4) workers at a time** – Increasing productivity.
- **Select *Automatic* or *Manual* Personal Fall Arrestor Cable Sleeves** – Both cable sleeves are designed to follow the user along the lifeline while ascending or descending, instantly locking in the event of a fall.



Vi-Go Automatic Pass-Through Cable Sleeve



Automatic Pass-Through Cable Guide

■ Vi-Go Continuous Ladder Climbing Safety Systems with Automatic Pass-Through

- **Uninterrupted fall protection** – Uniquely-designed, patent-pending Vi-Go Cable Sleeve automatically bypasses intermediate cable guides, keeping both hands free for climbing; travels smoothly along cable and locks instantly in the event of a fall.
- **Easy, one-hand operation** for attachment/detachment from the system. No pins/chains or external parts to lose or damage.
- **Automatic pass-through cable guides** secure lifeline to prevent cable wear and enable the system to accommodate curves.
- **Withstand harsh environments** – The Vi-Go Cable Sleeve is constructed with durable, corrosion-resistant aluminum and stainless steel components.
- **Attachment mechanism engineered to prevent incorrect installation**, ensuring greater safety. Unit will not open if attached incorrectly.
- **Cable sleeve integrated shock-absorbing element**
 - Provides a “dual shock-absorbing system” to further reduce fall forces. Protects the system and ladder from damage.
 - Once a fall occurs, the deployed shock absorber indicates the unit must be taken out of service.
- **Accommodate 5/16-inch (8mm) or 3/8-inch (10mm) cable.**

■ Vi-Go Ladder Climbing Safety Systems with Manual Pass-Through

- **Require manual removal/insertion** of cable with intermediate guides.
- **Cable guides secure lifeline** to prevent cable wear.
- **Manual Vi-Go Cable Sleeve follows the worker** while ascending and descending.
- **Cable sleeve locks instantly** in the event of a fall.
- **Accommodate 3/8-inch (10mm) cable.**



Manual Vi-Go Cable Sleeve with Carabiner



Manual Pass-Through Cable Guide

Vi-Go systems meet ANSI A14.3, OSHA 1926.502 and 1910.27, and CSA Z259.1-98 (Class AS) standards requirements.

INDUSTRY APPLICATIONS

- Power Transmission Towers
- Wind Energy
- Telecommunications Towers
- General Industry
- Petrochemical Plants
- Drilling Platforms
- Water Tanks/Towers
- Chimney Stacks
- Silos

Automatic Pass-Through Cable Guides

Vi-Go automatic pass-through cable sleeve glides easily through intermediate cable guides uninterrupted. Hands and feet are free for climbing.



Integrated stainless steel shock-absorbing element



Easy, one-hand attachment



Design prevents upside-down installation (channel will not open)

Vi-Go™ System Components

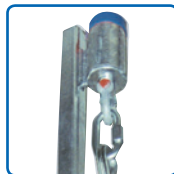
Dual Function Tensioner

- Prevents ladder rung deformation
- Indicates when the lifeline is properly adjusted for quick, easy installation and inspection



Top Bracket Shock Absorber

- Absorbs energy generated in the event of a fall
- Quick-link design for trouble-free cable installation



Vi-Go™ System Kits

Vi-Go Continuous Ladder Climbing Safety System with Automatic Pass-Through

Kits include a top bracket assembly with shock absorber, a bottom lifeline tensioner, 3/8-inch (10mm) galvanized steel cable lifeline, all automatic pass-through intermediate cable guides (when applicable).

SKU	Length of System	Number of Cable Guides
VG/30FT	30 ft. (9.1m)	0
VG/40FT	40 ft. (12.2m)	0
VG/50FT	50 ft. (15.2m)	1
VG/60FT	60 ft. (18.3m)	1
VG/70FT	70 ft. (21.3m)	1
VG/80FT	80 ft. (24.4m)	1



VGCS-SC

Vi-Go Automatic Pass-Through Cable Sleeve* Sold Separately

SKU	Description
VGCS	Automatic Pass-Through Cable Sleeve
VGCS-C	Automatic Pass-Through Cable Sleeve with carabiner
VGCS-SC	Automatic Pass-Through Cable Sleeve with integral swivel and carabiner

Vi-Go Ladder Climbing Safety System Kits with Manual Pass-Through

Kits include a top bracket assembly with shock absorber, a bottom 3/8-inch (10mm) galvanized steel cable lifeline, all necessary hardware, cable guides and instruction manual.

SKU	Length of System	Number of Cable Guides
TRS/50FT	50 ft. (15.2m)	1
TRS/60FT	60 ft. (18.3m)	1
TRS/70FT	70 ft. (21.3m)	1
TRS/80FT	80 ft. (24.4m)	1
TRS/90FT	90 ft. (27.4m)	2



TRCS-C

Vi-Go Manual Pass-Through Cable Sleeve* Sold Separately

SKU	Description
TRCS	Manual Pass-Through Cable Sleeve
TRCS-C	Manual Pass-Through Cable Sleeve with carabiner
TRCS-SC	Manual Pass-Through Cable Sleeve with integral swivel and carabiner

Build Your Own System

For multiple system installations requiring cutting

On a job site, exact cable lengths may vary and pre-cut cable lengths may not be available.

The solution is to **Build Your Own System** by selecting the following components:

Top bracket assembly

Bottom bracket assembly

Vi-Go cable guides – continuous or manual

(Minimum one (1) required per 40-ft. (12.2m) length)¹

Vi-Go thimble & wire rope cable termination kit for 3/8-inch (10mm) diameter cable

Cable

Vi-Go cable sleeve – automatic or manual

¹ According to ANSI A14.3, the maximum spacing between cable guides is 40 ft. (12.2m)

Kits with longer cable lengths available

System Kits

Standard bracket assembly with all necessary hardware, (able) and instruction manual.



SKU	Length of System	Number of Cable Guides
VG/90FT	90 ft. (27.4m)	2
VG/100FT	100 ft. (30.5m)	2
VG/110FT	110 ft. (33.5m)	2
VG/120FT	120 ft. (36.6m)	2
VG/130FT	130 ft. (39.6m)	3
VG/140FT	140 ft. (42.7m)	3

Other system kits are available in 10-ft. (3.0m) increments up to 300 ft. (91.4m), and then 50-ft. (15.2m) increments up to 500 ft. (152.4m) (e.g. To place an order for a Vi-Go system kit with 250-ft. (76.2m) length cable, the model number is VG/250FT)

***NOTE: The Vi-Go Automatic Pass-Through Cable Sleeve can ALSO be used with the manual system.**

Standard bracket assembly with lifeline tensioner, hardware, manual pass-through intermediate



SKU	Length of System	Number of Cable Guides
TRS/100FT	100 ft. (30.5m)	2
TRS/110FT	110 ft. (33.5m)	2
TRS/120FT	120 ft. (36.6m)	2
TRS/130FT	130 ft. (39.6m)	3
TRS/140FT	140 ft. (42.7m)	3

Other system kits are available in 10-ft. (3.0m) increments up to 300 ft. (91.4m), and then 50-ft. (15.2m) increments up to 500 ft. (152.4m) (e.g. To place an order for a Vi-Go system kit with 250-ft. (76.2m) length cable, the model number is TRS/250FT)

***NOTE: The Vi-Go Manual Pass-Through Cable Sleeve can ONLY be used with the manual system or systems without cable guides.**

Build Your Own System

Standard length system kits will not meet installation requirements.

e.g. To place an order for 22 Build Your Own Systems (100 ft. [30.5m]) with Vi-Go continuous pass-through guides and Vi-Go automatic cable sleeves:

SKU	Description	Qty.
TRTB	Standard top bracket assembly	22
TRBB	Standard bottom bracket assembly	22
VGCG	Automatic pass-through cable guide	44 ¹
VGTC	Vi-Go thimble & wire rope cable termination kit for 3/8-inch (10mm) diameter cable	22
VGC	Spool of 3/8-inch (10mm) galvanized cable	TBD
VGCS-SC	Automatic pass-through cable sleeve	1 per worker

Vi-Go™ System Components

Top Bracket Assembly

- Top Bracket Shock Absorber
- Quick-Link

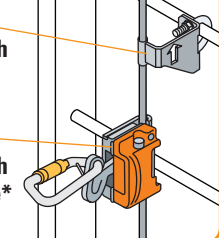
Cable (option to cut to required length)

Select from **TWO** Vi-Go pass-through systems:

Automatic Vi-Go System

Automatic Pass-Through Cable Guide

Automatic Pass-Through Cable Sleeve*

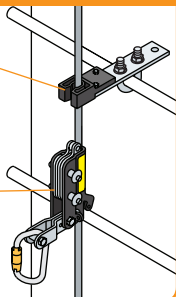


OR

Manual Vi-Go System

Manual Pass-Through Cable Guide

Manual Pass-Through Cable Sleeve



*NOTE: The Vi-Go Automatic Pass-Through Cable Sleeve can ALSO be used with the manual system.

Bottom Bracket Assembly

- Lifeline Tensioner

Build Your Own System Cable Options:

Vi-Go Cable Termination Options:



Pre-cut factory thimble swaging



Thimble and cable clips

Cable Options:

- 3/8-inch (10mm) galvanized or stainless steel
- 5/16-inch (8mm) stainless steel



Vi-Go™ Brackets, Guides & Other Components

SKU	Description
TRTB	Standard 5-ft. (1.5m) top bracket assembly, bracket tube 1.5" x 1.5" (38.1mm x 38.1mm)
TRTB-7	7-ft. (2.1m) top bracket assembly for added extension above platform, bracket tube 2" x 2" (50.8mm x 50.8mm)
TRTB-10	10-ft. (3.0m) top bracket assembly for added extension above platform, bracket tube 2" x 2" (50.8mm x 50.8mm)
TRBB	Bottom bracket assembly
VGCG	Vi-Go automatic pass-through cable guide
TRCG	Vi-Go manual pass-through cable guide
VGC	Spool of 3/8-inch (10mm) galvanized cable
VTWC	Vi-Go thimble & wire rope cable termination kit for 3/8-inch (10mm) diameter cable



Automatic Pass-Through Cable Guide (VGCG)



Manual Pass-Through Cable Guide (TRCG)

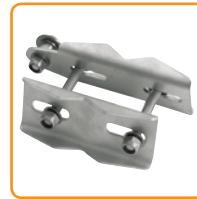
Application-Specific Components

The Vi-Go product offering includes specialty system components that meet the needs of a variety of applications.



Compact Ladder Bracket

- Attaches directly to rungs of the ladder
- Lightweight alternative to longer brackets when transferring onto upper platform is not required
- Available in galvanized or stainless steel



Universal Rung Clamp

- Attaches to pipe of various diameters, angular steel or flat steel structures
- Available in galvanized or stainless steel

These specialty components are available through Miller Engineered Solutions.

For more information, please call 800/325-6746.

Other Vertical Climbing Products

■ Soll GlideLoc® Fixed Rail Ladder Climbing System

Custom engineered as an integral component of a new fixed ladder system or retrofit to an existing fixed ladder.

- Transfer from vertical to horizontal track without disconnecting.
- Safe exit at top of rail system.
- Folding footrests provide resting platform.
- Available in aluminum, galvanized or stainless steel.

For more information, contact Miller Technical Service at 800/873-5242.



■ Miller Revolution™ Ladder Climbing Harness

Custom designed for applications in Power Transmission Towers, Wind Energy, Telecommunications Towers, and Oil/Gas.

For more information, contact Miller Technical Service at 800/873-5242.



This equipment should only be used after reading the manufacturer's instructions. Failure to follow instructions could result in serious injury or fatality.



by Honeywell

▶ Ask the Expert ... Ask Miller.

800/873-5242 Fax 800/892-4078
or 814/432-2118 or Fax 814/432-2415

www.millerfallprotection.com

For more information or to place an order, please contact your Miller® distributor:

LVGS/0908/30M/RPI