

S100D
9/16/14

Cotterman®



STEP STANDS and STOOLS



500 lb load rating
One, two and three step models
Available in steel or aluminum

STEEL STEP STANDS

Product Features:

- 45 degree climbing angle
- 500 lbs. capacity
- Serrated tread
- Gray powder coat finish



**Model No.
STP-1301**

Step Count: 2
Overall Dimensions (inches)
23D x 23W x 20H
Tread Size (inches)
10D x 20W
Welded
Rubber Feet
Packaging: Shrinkwrapped



**Model No.
STP-1302**

Step Count: 2
Overall Dimensions (inches)
23D x 23W x 20H
Tread Size (inches)
10D x 20W
Welded
Rubber Feet and Casters
Packaging: Shrinkwrapped



**Model No.
STP-1401**

Step Count: 3
Overall Dimensions (inches)
33D x 26W x 30H
Tread Size (inches)
10D x 22W
Unassembled
Rubber Feet
Packaging: Box



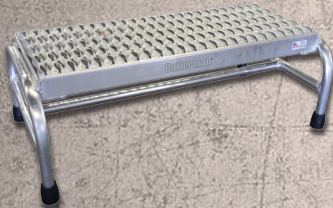
**Model No.
STP-1402**

Step Count: 3
Overall Dimensions (inches)
33D x 32W x 30H
Tread Size (inches)
10D x 28W
Unassembled
Rubber Feet
Packaging: Box

ALUMINUM STEP STANDS

Product Features:

- 45 degree climbing angle
- 500 lbs. capacity
- Serrated tread



**Model No.
STP-1801**

Step Count: 1
Overall Dimensions (inches)
16D x 31W x 10H
Tread Size (inches)
12D x 28W
Welded
Rubber Feet
Packaging: Shrinkwrapped



**Model No.
STP-1802**

Step Count: 2
Overall Dimensions (inches)
22D x 23W x 20H
Tread Size (inches)
10D x 20W
Welded
Rubber Feet
Packaging: Shrinkwrapped



**Model No.
STP-1901**

Step Count: 3
Overall Dimensions (inches)
33D x 26W x 30H
Tread Size (inches)
10D x 22W
Unassembled
Rubber Feet
Packaging: Box



**Model No.
STP-1803**

Step Count: 3
Overall Dimensions (inches)
32D x 33W x 30H
Tread Size (inches)
10D x 30W
Welded
Packaging: Shrinkwrapped
Rubber Feet

- F.O.B. Crosswell, MI; Atlanta, GA;
Bakersfield, CA; Arlington, TX

Cotterman®

www.cotterman.com • info@cotterman.com

130 Seltzer Rd.
Crosswell, MI 48422
810-679-4400 • FAX 810-679-4510
TOLL FREE 800-5-LADDER
8 A.M. – 5 P.M. MON. THRU FRI.
(EASTERN STANDARD TIME)