



BE A PRO

PROFESSIONAL PRODUCTS CATALOG

Toter[®]
PRO
Built for Extremes[®]



3-Step System Solution

By eliminating manual lifting and dumping, you can help reduce workplace injuries and the associated costs.



\$60,618 employer
cost per claim*

Top 4 Industries with Workers' Comp Claims



Construction



Service-related



Healthcare



Material moving



Average work days lost due
to workplace injury**

1.

Collect

Load your cart



2.

Transport

Mechanical dump
& towing



3.

Dispose

Automated lift



BE AWARE: The above depictions are for illustrative purposes only and are not substitutes for or recommendations of safe workplace practices. Any piece of equipment can be dangerous, even deadly, if not used properly. Become familiar with the proper use of these Toter® products and the safe operation of any accessories or related equipment and vehicles. Always inspect any piece of equipment before using it and **DO NOT USE** if anything cannot be safely corrected as severe injury could result. Common sense, awareness of surroundings, and caution for the circumstances are best known by the operator – be alert to what you are doing!

*<https://www.osha.gov/dcsp/smallbusiness/safetypays/estimator.html>

**Source: U.S. Bureau of Labor Statistics, 2015

TABLE OF CONTENTS

Caster & Two Wheel Carts **6-8**

Color Options **10**

Cart Lid Options **11**

Litter Containers **12**

Slimline Containers **13**

Round Cans **14**

Toter Utility Carts **15**

Toter Box **16**

Fire Resistant Waste Bins **17**

Organic Bins **18**

Cube Trucks **21**

Mobile Trucks **22**

Tilt Trucks **23**

Lifters **26-30**

Plastic FEL Containers **31-33**

Cart Liners & PowerFresh™ **35**



How Advanced Rotational Molding™ Makes Toter Carts Superior

Toter's engineers and designers developed a revolutionary breakthrough in rotational molding known as Advanced Rotational Molding™ to create the toughest carts that outlast the competition.

The process eliminates weakness, brittleness, and poor impact resistance associated with injection-molded plastic products. Toter's Advanced Rotational Molding™ process creates a stronger cart that is built for toughness and maximum impact resistance. Toter products are built to keep working after others fail. That's why there's no two wheel cart that's built to last like a Toter.

Advantages of Advanced Rotational Molding:

- Superior toughness and durability
- Single-piece product design – no seams
- Consistent wall thickness
- Stress-free, zero-pressure product
- Unique design and structural capabilities like Rugged Rim®, sealed stop bar journals, and granite finish
- UV stable
- Custom colors
- Corrosion- and chemical-resistant
- Ability to mold in graphics



STEP 1

COLLECT

Toter[®]
PRO

Built for Extremes[®]

CARTS



Two Wheel Carts

Toter two wheel carts are perfect for the collection, transportation and disposal of waste and recycling for industrial, commercial, and institutional environments. The Advanced Rotational Molding™ manufacturing process provides superior product durability and long-lasting service life. They stand up to just about anything that's tossed in them - or at them. Quiet-cap wheels reduce noise when moving carts. Toter carts are also compatible with mechanical lifters to help reduce workplace injuries.

MODEL#	Description	Dimensions (L x W x H)	Wheel Size	Load Rating
ANA32*	32 Gallons	24.3" x 19.8" x 37.5"	8"	112 lbs. / 50.8 kg
ANA48*	48 Gallons	28.8" x 23.5" x 37.5"	10"	168 lbs. / 76.2 kg
ANA64*	64 Gallons	31.8" x 24.3" x 41.8"	10"	224 lbs. / 101.6 kg
ANA96*	96 Gallons	35.8" x 29.8" x 43.3"	10"	335 lbs. / 152.0 kg

Caster Carts

Toter caster carts are ideal for maneuvering the heaviest of loads. Added caster wheels eliminate the need to tilt the cart to roll, helping stabilize heavy loads.

MODEL#	Description	Dimensions (L x W x H)	Wheel Size	Load Rating
ACC32*	32 Gallons	24.0" x 19.8" x 40.0"	Wheel 6" / Caster 3.5"	112 lbs. / 50.8 kg
ACC64*	64 Gallons	31.8" x 24.3" x 44.4"	Wheel 10" / Caster 4"	224 lbs. / 101.6 kg
ACC96*	96 Gallons	35.8" x 29.8" x 46.0"	Wheel 10" / Caster 4"	335 lbs. / 152.0 kg

Organics Carts

Toter two wheel and caster carts are specifically designed to withstand the added burden of collecting heavy, wet organic waste. Carts are designed to contain wet waste with a molded, sealed stop-bar that prevents leakage.

MODEL#	Description	Dimensions (L x W x H)	Wheel Size	Load Rating
ONA24	24 Gallons	23.5" x 19.8" x 34.5"	10"	150 lbs. / 68.0 kg
ONG32 †	32 Gallons	24.0" x 19.8" x 37.5"	8"	200 lbs. / 90.7 kg
ONA32	32 Gallons	24.0" x 19.8" x 37.5"	8"	200 lbs. / 90.7 kg
ONA48	48 Gallons	28.8" x 23.5" x 37.5"	10"	300 lbs. / 136.0 kg
ONA64	64 Gallons	31.8" x 24.3" x 41.8"	10"	400 lbs. / 181.4 kg
ONG64 †	64 Gallons	32.0" x 24.3" x 41.8"	10"	400 lbs. / 181.4 kg
ACG32* †	32 Gallons	24.0" x 19.8" x 40.0"	Wheel 6" / Caster 3.5"	200 lbs. / 90.7 kg
ACO32	32 Gallons	24.0" x 19.8" x 40.0"	Wheel 6" / Caster 3.5"	200 lbs. / 90.7 kg
ACO64	64 Gallons	31.8" x 24.3" x 44.4"	Wheel 10" / Caster 4"	400 lbs. / 181.4 kg
ACG64* †	64 Gallons	32.0" x 24.3" x 44.3"	Wheel 10" / Caster 4"	400 lbs. / 181.4 kg

*Quickship

†Gasketed lid and thumb turn latch

For options available, please refer to page 9 & 10.



Organics

CARTS



Medical Waste Carts

Toter's latching medical waste carts are designed specifically for the healthcare industry, and provide a safe, secure method for collecting, moving, and disposing of regulated medical waste. They feature smooth interior walls that are simple to clean and disinfect, and are available in multiple sizes, with or without caster wheels. Caster medical waste carts are great for heavier loads since the caster wheels eliminate the need to tilt the cart to roll it and help stabilize heavier loads.

MODEL#	Description	Dimensions (L x W x H)	Wheel Size	Load Rating
RMN32	32 Gallons	24.0" x 19.8" x 37.5"	8"	112 lbs. / 50.8 kg
RMC32*	32 Gallons	24.0" x 19.8" x 40.0"	Wheel 6" / Caster 3.5"	112 lbs. / 50.8 kg
RMN64*	64 Gallons	32.0" x 24.3" x 41.8"	10"	150 lbs. / 68.0 kg
RMC64*	64 Gallons	32.0" x 24.3" x 44.3"	Wheel 10" / Caster 4"	150 lbs. / 68.0 kg
RMN96*	96 Gallons	36.0" x 29.8" x 43.3"	10"	225 lbs. / 102 kg
RMC96*	96 Gallons	36.0" x 29.8" x 46.0"	Wheel 10" / Caster 4"	225 lbs. / 102 kg

*Quickship



Secure Document Management Carts

Toter's document management carts are designed specifically for protecting some of an organization's most valuable assets – its confidential materials. Businesses must ensure that sensitive or confidential documents and private information are protected from misuse, identity theft, and loss, and Toter's document management carts are a great solution. Locking lids keep confidential documents securely contained.

MODEL#	Description	Dimensions (L x W x H)	Wheel Size	Load Rating
CDA32	32 Gallons	24.0" x 19.8" x 37.5"	8"	112 lbs. / 50.8 kg
CDC32	32 Gallons	24.0" x 19.8" x 40.0"	Wheel 6" / Caster 3.5"	112 lbs. / 50.8 kg
CDA64	64 Gallons	32.0" x 24.3" x 42.0"	10"	224 lbs. / 101.6 kg
CDC64*	64 Gallons	32.0" x 24.3" x 44.5"	Wheel 10" / Caster 4"	224 lbs. / 101.6 kg
CDA96	96 Gallons	36.0" x 29.8" x 43.5"	10"	335 lbs. / 152.0 kg
CDC96*	96 Gallons	36.0" x 29.8" x 46.1"	Wheel 10" / Caster 4"	335 lbs. / 152.0 kg

*Quickship



Bear-Tough Carts

With a bear-resistant lock, double-walled lid and steel-reinforced rim, Toter® Bear-Tough garbage cans stand up to the toughest bears. Toter's Bear-Tough garbage cans are strong enough to withstand repeated clawing and chewing.

MODEL#	Description	Dimensions (L x W x H)	Wheel Size	Load Rating
79B32	32 Gallons	24.3" x 20" x 38"	8"	112 lbs. / 50.8 kg
79B64*	64 Gallons	31.5" x 24.8" x 42.3"	10"	224 lbs. / 101.6 kg
79B96*	96 Gallons	35.5" x 30.3" x 43.8"	10"	335 lbs. / 152.0 kg

*Quickship

Standard color: Blackstone

For options available, please refer to page 9 & 10.



BIOHAZARD
UN 3291, Regulated Medical
Waste, n.o.s., 6.2, PG II

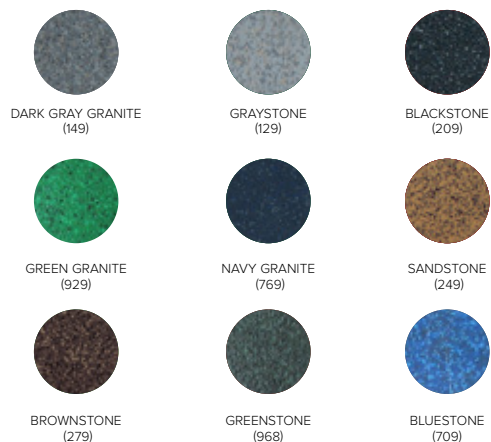
Medical Waste

COLORS

Solid Colors



Granite Colors



Colors and textures shown are as accurate as printing allows. Actual product colors and textures are subject to variation from printed sample.

	Black (200)	Blue (705)	Waste Green (925)	Industrial Gray (146)	Bright Lime Green (780)	Red (570)	Brownstone (279)	Graystone (129)	Blackstone (209)	Sandstone (249)	Bluestone (709)	Dark Gray Granite (149)	Brown (270)	Greenstone (968)
Litter containers	▲		●					■	▲	▲	▲		●	▲
Tilt trucks	▲	■	●	■					■				●	
Round Cans	▲	▲	●						▲			■	●	■
Two wheel carts	▲	■	●				■	■	■				●	■
Caster carts	▲	■	●				▲	■	■				●	▲
Organics carts			●		■								●	
Medical carts			●			■							●	
Cube/mobile trucks	▲	■	●	■					■				●	
Doc. management			●					■					●	
Slimlines		■	●					■	▲	▲			●	▲
FELs	●	●	●							●	●		●	

■ Quickship; most popular items available for immediate shipment (up to 15 units). More than 15 units will be standard delivery.

▲ Standard colors; minimum order quantity – 15

● Standard colors; minimum order quantity – 1

Colors that are not listed under each product category are considered custom, are sold at a 20% upcharge, and require a minimum order quantity of 30.

OPTIONS

Injection-Molded Lids



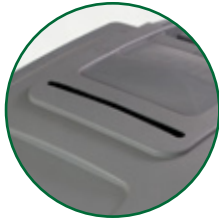
Standard Lid



Padlock Hasp Lock Lid



5" Can Cutout with or without rubber collar

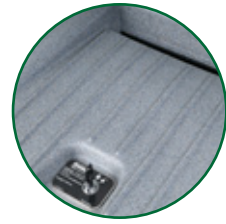


Lid with Paper Slot

Roto-Molded Lids



Latching Medical Waste Lid



Locking Confidential Document Lid



Latching Organics Lid

Custom Options

- Pantone Color Matching
- Post-mold graphics
- In-mold labels (IML) on lids
- Hot stamps
- Towable carts



Factory-installed pull-bars for caster carts only
3-carts maximum pull



SLIMLINE CONTAINERS

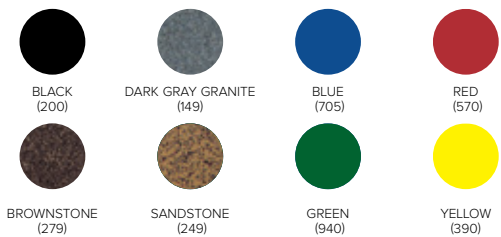
No matter which configuration you choose, Toter Slimline Containers are the perfect solution for your food service environment needs. Made by a roto-molding process that eliminates weak spots, our containers are built for extreme situations and extended service, indoors or outdoors. Available in two sizes with four lid choices, and loaded with useful features like thicker drag strips, three robust handles, rugged rims and venting channels, Toter Slimline Containers are smart, tough, and dependable members of your team.



Toter Slimline Food Service

- Integrated bag cinch
- Durable construction to withstand everyday use
- Broad range of colors and customization
- Bottom wear strip for dragging
- Various lid designs to fit your needs

Colors



Colors and textures shown are as accurate as printing allows. Actual product colors and textures are subject to variation from printed sample. Custom colors available.



MODEL#	Description
SL016-00000	16G Slimline
SL023-00000	23G Slimline

Lid Options

MODEL#	Description
SL000-10000	Slimline - Swing Lid
SL000-20000	Slimline - Bottle/Can Lid
SL000-30000	Slimline - Mixed Recycling Lid
SL000-40000	Slimline - Paper Lid
SL000-50000	Slimline - Hinged Lid
SL000-60000	Slimline - Open Top Lid
SL000-70000	Slimline - Dolly



LITTER CONTAINERS

Toter's litter containers are designed for industrial, commercial, recreational, and institutional environments. Constructed using Advanced Rotational Molding™ for maximum durability and impact resistance, Toter litter containers are extremely rugged and built to last.



Litter Containers

MODEL#	Description	Size	Dimensions (L x W x H)	Load Rating
860-A*	Dome Top Litter Container with Automatic Gravity Release Latch for Automated Collection	60 Gallons	28.3" x 28.3" x 48.8"	200 lbs. / 90.7 kg
860-B**	Dome Top Litter Container w/ Bag Holder Straps for Manual or Automated Collection (w/o Gravity Latch)	60 Gallons	28.3" x 28.3" x 48.8"	200 lbs. / 90.7 kg
840-K*	Dome Top Litter Container for Manual Collection	45 Gallons	27.3" x 27.3" x 46.5"	150 lbs. / 68.0 kg

*A-model (860-A) can be emptied by automated truck. Ideal for bus stops and parks.

*Quickship

Litter Container Accessories

MODEL#	Description	Dimensions (L x W x H)
RL060-00BLK*	Rigid Liner for 60 Gallon Litter Container	22.8" x 23.0" x 31.0"
RL045-00BLK*	Rigid Liner for 45 Gallon Litter Container	21.8" x 22.0" x 27.0"
5660-50-0030	Can/Bottle Recycling Door Inserts for 60 Gallon Litter Container (sold in packs of four)	—
5660-50-0031	Can/Bottle Recycling Door Inserts for 45 Gallon Litter Container (sold in packs of two)	—

*Quickship



Custom graphics available for additional charge.



Rigid Liner



Can/Bottle Recycling Door Inserts (Inserts sold in packs of four)

For color options, please refer to page 9.

ROUND GARBAGE CANS

The Toter Round Can was designed to withstand heavy and continuous use both indoors and out. Our Advanced Rotational Molding™ manufacturing process eliminates built in stress, weakness, and brittleness that's associated with plastic injection containers, lending itself to a more durable trash can that is engineered for toughness and high impact resistance.

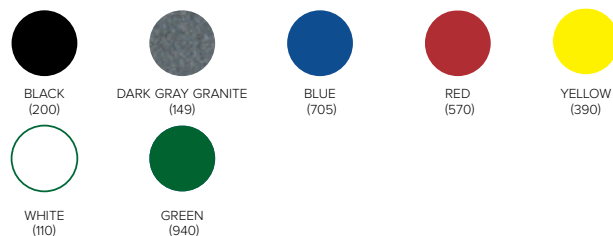
The Toter Round Can is the perfect solution for industrial, construction, food service, healthcare, and institutional environments.



Round Cans

MODEL#	Description	Width (Including handles)	Height	Diameter
RND20	20 gal. Round Container	23.4"	23.2"	19.4"
RND32	32 gal. Round Container	26.5"	27.9"	22.0"
RND44	44 gal. Round Container	28.6"	31.4"	24.0"
RND55	55 gal. Round Container	31.3"	31.4"	26.3"

Colors



Colors and textures shown are as accurate as printing allows. Actual product colors and textures are subject to variation from printed sample. Custom colors available.

Accessories



MODEL#	Description
RND20-L	20 gal. Round Lid
RND32-L	32 gal. Round Lid
RND44-L	44 gal. Round Lid
RND55-L	55 gal. Round Lid



MODEL#	Description
DAK10-0000	Dolly Adapter
WDL10-00BLK	Dolly Kit

TOTER UTILITY CARTS

The durable, ergonomically designed utility cart by Toter will help contribute to worker safety and increase their efficiency. Available in a variety of configurations and sizes, it helps meet your day to day needs.

- Durable structural foam construction resists dents and chips, impact and rust resistant
- Available with ergonomic handle for worker safety
- Various sizes for all needs
- 550 lb load capacity



Large Lipped Cart
UCL00-S0002



Small Lipped U-Cart With
Ergonomical Handle
UCL00-E0001

Heavy Duty Utility Carts

Lipped-Shelf Carts

MODEL#	Style	Tray	Handle	Dimensions (L x W x H)	US Capacity
UCL00-S0002	Large	Lipped	Straight	40.7 x 25.6 x 33.5	550
UCL00-S0001	Small	Lipped	Straight	34.4 x 16.7 x 32.5	550
UCL00-E0002	Large	Lipped	Ergo	43.7 x 25.6 x 33.5	550
UCL00-E0001	Small	Lipped	Ergo	37.7 x 17.1 x 33.5	550



Large Flat U-Cart
UCF00-S0002



Small Flat U-Cart With
Adjustable Legs
UCF00-S0001

Flat-Shelf Carts

MODEL#	Style	Tray	Handle	Dimensions (L x W x H)	US Capacity
UCF00-S0002	Large	Flat	Straight	44.0 x 25.2 x 32.2	550
UCF00-S0001	Small	Flat	Straight	38.1 x 18.8 x 32.2	550



Features:



Ergonomical Handle



Molded-In Caddy



Lipped Tray



Non-Marking Caster

Available Colors



Black

TOTER BOX

The Toter Box provides versatile, secure storage for your most valuable tools and equipment. This keyed locking system and double walled lid provide maximum protection for your gear. Built with Advanced Rotational Molding™, the Toter Box is half the weight of similar-sized metal job boxes. But don't underestimate it. The Toter Box is no lightweight when it comes to hauling your most important gear. It holds nearly 8x its weight with a load rating of 400 lbs.



Toter Box

48.13" x 24.88" x 25.87"
60.9 lbs

MODEL#	COLOR
TB095-12000	Granite with Black Lid



Toter Box with Frame

48.13" x 24.63" x 29.87"
95.3 lbs

MODEL#	COLOR
TB095-11000	Granite with Black Lid



Toter Box with Caster

48.13" x 24.88" x 36.1"
110.4 lbs

MODEL#	COLOR
TB095-10000	Granite with Black Lid

Hitch Connector

Sold separately
Part # TB095-15000

Features:



Strong double-walled lid provides two layers of security



Padlock locations in each corner of the lid



Secure metal latch



Steel handles for easy lifting

Additional Features:

- 400 lb. load rating
- Weighs roughly half as much as metal boxes

Standard color: Pro Grade granite with black lid

FIRE RESISTANT WASTE BINS

Toter's Fire Resistant Waste Bins are designed with safety in mind. Constructed with durable plastic, they are heavy-duty and are built to last. These bins are also scratch-resistant and they won't rust or stain. So, no matter what you throw at them—or in them—our waste bins can handle it with ease.

- Fire resistant material enables a safe environment
- Plastic construction is scratch resistant and they are rust and stain resistant
- Durable plastic material means long life



14 QT

8.3"L x 11.5"W x 11.9"H
1.3 lbs

MODEL#	COLOR
WBF03-00BLK	Black ●
WBF03-00SAN	Sand ●
WBF03-00BRW	Brown ●



27 QT

10.3"L x 14.8"W x 15.1"H
2.4 lbs

MODEL#	COLOR
WBF06-00BLK	Black ●
WBF06-00SAN	Sand ●
WBF06-00BRW	Brown ●
WBF06-00BEI	Beige ●
WBF06-00GRN	Green ●



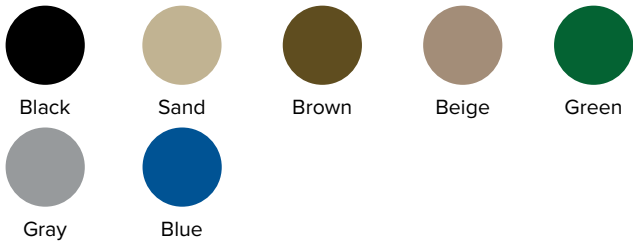
40 QT

10.7"L x 15.4"W x 19.8"H
2.9 lbs

MODEL#	COLOR
WBF10-00BLK	Black ●
WBF10-00SAN	Sand ●
WBF10-00BRW	Brown ●
WBF06-00BEI	Beige ●
WBF10-00GRY	Gray ●
WBF10-00BLU	Blue ●



Available Colors



Colors and textures shown are as accurate as printing allows. Actual product colors and textures are subject to variation from printed sample.

ORGANICS BINS

Available in 2 Gallon and 13 Gallon (wheeled) sizes, these durable, lightweight bins are designed for easy maneuvering and handling with locking seals to help keep odors at bay.

From the kitchen sink to the curb, Toter's Organics Bins are equipped for all your organics needs.

- Made with durable high density polyethylene to enable long life
- Odor is controlled with snap type lid
- Latch and animal lock (13 Gallon size only) to keep pesky predators at bay
- Custom colors, lids, and logo options available

Description	Size	Dimensions (L x W x H)
Organics Bin	2 gallon	11.5" x 8.5" x 9.25"
Organics Bin	13 gallon	14" x 12" x 30"



STEP 2

TRANSPORT



Material Handling

CUBE TRUCKS

Toter's cube trucks are great for collecting and transporting waste. Rugged Rim® technology and durable rotational molded construction means they're built to last. Recessed gripping areas make them easy to maneuver the heaviest loads.

- Load ratings up to 800 lbs.
- Equipped with standard forklift pockets (AMC only)
- Powder-coated frames reduce corrosion, prevent flaking and ensure long service life
- Removable split lids available
- Sizes: 8, 12, 16 and 20 cubic feet
- Compatible with Universal Lifters (AMC only)



Cube Trucks

MODEL#	Description	Size	Dimensions (L x W x H)	Load Rating
MMC08	Heavy-Duty Manual Cube Truck (Manual Unloading)	8 Cubic Feet	36.3" x 25.5" x 28.0"	300 lbs./ 136.1 kg
MMC12*	Heavy-Duty Manual Cube Truck (Manual Unloading)	12 Cubic Feet	40.8" x 27.5" x 32.5"	400 lbs./ 181.4 kg
MMC16*	Heavy-Duty Manual Cube Truck (Manual Unloading)	16 Cubic Feet	44.0" x 30.4" x 35.5"	500 lbs./ 226.8 kg
MMC20*	Heavy-Duty Manual Cube Truck (Manual Unloading)	20 Cubic Feet	49.3" x 32.5" x 36.5"	600 lbs./ 272.2 kg
AMC20*	Heavy-Duty Cube Truck With Forklift Pockets (Automated or Manual Unloading)	20 Cubic Feet	49.3" x 32.5" x 38.8"	800 lbs./ 362.9 kg

*Quickship

Lid Options

MODEL#	Description	Dimensions (L x W x H)
LMC08	Removable Split Lid Fits All 8 Cubic Feet Cube Trucks	37.3" x 27.0" x 6.5"
LMC12	Removable Split Lid Fits All 12 Cubic Feet Cube Trucks	41.8" x 28.8" x 6.5"



For color options, please refer to page 9.

MOBILE TRUCKS

Toter heavy-duty mobile trucks are perfect for moving large, heavy waste. Constructed with durable plastic, they're lighter than steel models. Powder-coated frames reduce corrosion and flaking to help ensure long service life.



FLM20



AMT10



FLA20

MODEL#	Description	Capacity/Volume	Dimensions (L x W x H)	Wheels/Casters	Load Rating
AM110*	Universal Mobile Truck	1 Cubic Yard	58.0" x 33.0" x 44.8"	5", 1 Directional Lock, 3 Swivel; Corner Placement	1,000 lbs. / 453.6 kg
AMT10*	Universal Mobile Truck with Pintle Hook Tow Assembly	1 Cubic Yard	59.3" x 33.0" x 45.8"	6", 2 Directional Lock, 2 Swivel; Corner Placement	1,000 lbs. / 453.6 kg
AM120	Universal Mobile Truck	2 Cubic Yard	68.0" x 54.0" x 51.8"	5", 1 Directional Lock, 3 Swivel; Corner Placement	2,300 lbs. / 1,043.3 kg
AMT20	Towable Universal Mobile Truck	2 Cubic Yard	69.3" x 54.0" x 52.8"	6", 2 Directional Lock, 2 Swivel; Corner Placement	2,300 lbs. / 1,043.3 kg
AMA20	Rapid Speed Mobile Truck (Towable up to 25 mph)	2 Cubic Yard	68.3" x 54.0" x 62.8"	4.75" x 16" Pneumatic Wheels	1,500 lbs. / 680.4 kg
FLM20	Mobile Truck with Attached Lid	2 Cubic Yard	75.5" x 44.3" x 51.5"	5", 1 Directional Lock, 3 Swivel; Corner Placement	1,000 lbs. / 453.6 kg
FLT20	Mobile Truck with Attached Lid and Pintle Hook Tow Assembly	2 Cubic Yard	78.3" x 44.3" x 52.5"	6", 2 Directional Lock, 2 Swivel; Corner Placement	1,000 lbs. / 453.6 kg
FLA20	Rapid Speed Mobile Truck with Attached Lid (Towable up to 25 mph)	2 Cubic Yard	76.3" x 44.3" x 63.3"	4.75" x 16" Pneumatic Wheels	1,000 lbs. / 453.6 kg
FLA30	Rapid Speed Mobile Truck with Attached Lid (Towable up to 25 mph)	3 Cubic Yard	75.8" x 50.5" x 76.0"	4.75" x 16" Pneumatic Wheels	1,500 lbs. / 680.4 kg

*Quickship

Lids

MODEL#	Description	Dimensions (L x W x H)
LM110	Removable Solid Lid, fits 1 Cu. Yd. Universal Mobile or Towable Mobile Trucks	59.5" x 34.5" x 6.0"
LMS10	Removable Split Lid hinges in center, fits 1 Cu. Yd. Universal Mobile or Towable Mobile Trucks	59.5" x 34.5" x 6.3"



For color options, please refer to page 9.

TILT TRUCKS

Toter tilt trucks are perfect for moving large, heavy waste to its final disposal area. Powder-coated frames reduce corrosion and flaking to help ensure long service life.



MODEL#	Description	Capacity/Volume	Dimensions (L x W x H)	Wheels	Load Rating
UTH03	Standard Duty	1/3 Cubic Yard	52.3" x 32.5" x 36.0"	2" x 12" / 5"	550 lbs. / 249.5 kg
UT005*	Utility Duty	1/2 Cubic Yard	54.3" x 32.3" x 37.0"	2" x 12" / 5"	400 lbs. / 181.4 kg
UT105*	Standard Duty	1/2 Cubic Yard	54.3" x 32.3" x 37.0"	2" x 12" / 5"	825 lbs. / 374.2 kg
UT205*	Heavy Duty	1/2 Cubic Yard	54.3" x 32.3" x 37.0"	3" x 12" / 5"	1,200 lbs. / 544.3 kg
UTP05 ‡	Universal Tilt Truck with Handle	1/2 Cubic Yard	54.3" x 32.3" x 37.5"	4" x 13" / 6"	825 lbs. / 374.2 kg
UTP75 ‡	Universal Tilt Truck with Handle	3/4 Cubic Yard	64.8" x 30.0" x 39.0"	4" x 13" / 6"	825 lbs. / 374.2 kg
UTP10 ‡	Universal Tilt Truck with Handle	1 Cubic Yard	73.0" x 32.5" x 44.8"	4" x 13" / 6"	1,200 lbs. / 544.3 kg
UTP15 ‡	Universal Tilt Truck with Handle	1-1/2 Cubic Yard	80.3" x 40.0" x 48.5"	4" x 13" / 6"	1,200 lbs. / 544.3 kg
UT175*	Standard Duty	3/4 Cubic Yard	64.8" x 30.0" x 38.4"	2" x 12" / 5"	825 lbs. / 374.2 kg
UT010*	Utility Duty	1 Cubic Yard	73.0" x 32.5" x 44.0"	2" x 12" / 5"	825 lbs. / 374.2 kg
UT110*	Standard Duty	1 Cubic Yard	73.0" x 32.5" x 44.0"	3" x 12" / 5"	1,200 lbs. / 544.3 kg
UT210*	Heavy Duty	1 Cubic Yard	73.0" x 32.5" x 44.0"	3" x 12" / 5"	2,000 lbs. / 907.2 kg
UT115*	Standard Duty	1-1/2 Cubic Yards	80.3" x 40.0" x 48.0"	3" x 12" / 5"	1,200 lbs. / 544.3 kg
UT215*	Heavy Duty	1-1/2 Cubic Yards	80.3" x 40.0" x 48.0"	3" x 12" / 5"	2,000 lbs. / 907.2 kg
UTT05	Towable Universal Tilt Truck with Handle	1/2 Cubic Yard	54.3" x 32.3" x 37.0"	3" x 12" / 5"	1,200 lbs. / 544.3 kg
UTT10	Towable Universal Tilt Truck with Handle	1 Cubic Yard	73.0" x 32.5" x 44.0"	3" x 12" / 5"	2,000 lbs. / 907.2 kg
UTT15	Towable Universal Tilt Truck with Handle	1-1/2 Cubic Yards	80.3" x 40.0" x 48.0"	3" x 12" / 5"	2,000 lbs. / 907.2 kg

Lid Options

MODEL#	Description	Dimensions (L x W x H)
LT105	Removable Split Lid for 1/2 Cu. Yd. Tilt Truck	51.8" x 34.0" x 7.0"
LT110	Removable Split Lid for 1 Cu. Yd. Tilt Truck	71.3" x 33.8" x 7.5"
LT115	Removable Split Lid for 1-1/2 Cu. Yd. Tilt Truck	78.3" x 41.0" x 7.8"

*Quickship

‡Pneumatic wheels

For color options, please refer to page 9.





Industrial

STEP 3

DISPOSE

Toter[®]
PRO

Built for Extremes[®]

LIFTER SOLUTIONS

MOBILE LIFTERS

Mobile lifters allow for flexibility in tight quarters or dumping into multiple locations. When not in use, they roll to store away easily. Unit ships standard with indoor/outdoor battery charger and deep cycle 12-volt battery.



Atlas (3081 SERIES MT)

Our Atlas lifter is designed to dump two-wheel caster carts as well as Toter 32- and 44-gallon round cans, and most competitive barrel-style containers with side lift handles. This lifter dumps into stationary and self-contained compactors, front or side load containers, roll-off open top containers, through-the-wall compactor chutes, etc.

MODEL#	Base Dimensions w/out chute	Load Rating	Dump Height	Power Supply
3081-MT-1000	53.50" x 35.00" x 43.00"	350 lbs.	68.00" – 84.00"	12 volt battery (DC)



Saddle (3081 SERIES MT)

The Saddle 3081 SERIES MT Lifter is designed to work with Toter 32/48/64/96 gallon two-wheel and caster carts only.

MODEL#	Base Dimensions w/out chute	Load Rating	Dump Height	Power Supply
3081-MT-5000	53.50" x 35.00" x 43.00"	350 lbs.	50.00" – 84.00"	12 volt battery (DC)

Rover (3063 SERIES MT)

Rover 3063 SERIES provides a greater range of dump height options. Also available for this unit as an add-on option: 3063-MT-6008 Auto-lock Hydraulic System for increased stability when dumping on uneven surfaces. This lifter is designed to work with Toter 32/48/64/96 gallon two-wheel and caster carts only.

MODEL#	Dimensions	Load Rating	Dump Height	Power Supply
3063-MT-4018	Dimensions depend on model	350 lbs.	41.5" – 43.5"	12 volt battery (DC)
3063-MT-4020	Dimensions depend on model	350 lbs.	45.5" – 47.5"	12 volt battery (DC)
3063-MT-4022	Dimensions depend on model	350 lbs.	49.5" – 51.5"	12 volt battery (DC)
3063-MT-4024 Towable	Dimensions depend on model	350 lbs.	53.5" – 55.5"	12 volt battery (DC)
3063-MT-4124 Non-towable	Dimensions depend on model	350 lbs.	53.5" – 55.5"	12 volt battery (DC)
3063-MT-4126	Dimensions depend on model	350 lbs.	57.5" – 59.5"	12 volt battery (DC)
3063-MT-4128	Dimensions depend on model	350 lbs.	61.5" – 64.5"	12 volt battery (DC)
3063-MT-4132	Dimensions depend on model	350 lbs.	69.5" – 74.5"	12 volt battery (DC)

Note: Dump height varies depending upon size of container being used. Rover lifters are available in a variety of additional dump heights as a special order. Towable Rover must be used with Pintle Hook Tow Hitch.



All lifter inquiries require a Lifter Selection Checklist, as they are built to custom specifications.

LIFTER SOLUTIONS



Economy (3069 SERIES MT)

Our most economically designed lifter works with Toter 32/48/64/96 gallon two wheel and caster carts only.

MODEL#	Dimensions	Load Rating	Dump Height	Power Supply
3069-MT-2000	39.00" x 48.00" x 46.50"	350 lbs.	48.0"	12 volt battery (DC)



Global Dumper (3065 CS SERIES MT)

The Global Dumper handles all ANSI Standard carts from 32 to 96 gallons. Works with two-wheel carts and caster carts.

MODEL#	Dimensions	Load Rating	Dump Height	Power Supply
3065-CS MT	N/A	350 lbs.	48.0"	208/230/460/600V single or three phase, 5 HP

MOUNTED LIFTER SOLUTIONS

Truck, compactor, baler, stand or wall mounted lifters are designed to reduce back injuries wherever permanent mounting is needed.



Trim Lifter (3063 SERIES)

The Trim Lifter handles Toter carts from 32 to 96 gallons. Works with two-wheel carts and caster carts.

MODEL#	Dimensions	Load Rating	Dump Height	Power Supply
3063-TL	39.0" x 48.0" x 46.5"	350 lbs.	Varies	PTO-Driven

Swing-Away Lifter (3079 SERIES)

The Swing-Away is a double-lifter unit that is hung on a swinging-gate frame and handles Toter carts from 32 to 96 gallons. Works with two-wheel carts and caster carts and 1-yard mobile trucks.

MODEL#	Dimensions	Load Rating	Dump Height	Power Supply
3079-SR or SL	Dimensions depend on model	Up to 2,000 lbs.	37.0"	208/230/460/600V single or three phase, 5 HP

All lifter inquiries require a Lifter Selection Checklist, as they are built to custom specifications.

LIFTER SOLUTIONS

STATIONARY LIFTERS

Stationary lifters are designed for permanent mounting into concrete or metal pads. Control options include manual or push-button controls.



Stand Mount (3063 SERIES ST)

The Stand Mount lifter is actuator operated with more versatile dump height options, which allows you to dump Toter 32/48/64/96 gallon two-wheel and caster carts only.

MODEL#	Dimensions	Load Rating	Dump Height	Power Supply
3063-ST-4124	N/A	350 lbs.	49.5" – 54.0"	115/230V single phase, 2 HP
3063-ST-4324	N/A	350 lbs.	49.5" – 54.0"	208/230/460V three phase, 2 HP
3063-ST-4126	N/A	350 lbs.	52.5" – 58.0"	115/230V single phase, 2 HP
3063-ST-4326	N/A	350 lbs.	52.5" – 58.0"	208/230/460V three phase, 2 HP
3063-ST-4128	N/A	350 lbs.	57.5" – 62.0"	115/230V single phase, 2 HP
3063-ST-4328	N/A	350 lbs.	57.5" – 62.0"	208/230/460V three phase, 2 HP
3063-ST-4132	N/A	350 lbs.	65.5" – 70.0"	12 volt battery (DC)
3063-ST-4332	N/A	350 lbs.	65.5" – 70.0"	12 volt battery (DC)



Atlas (3081 SERIES ST)

The Atlas lifter is designed to dump two-wheel and caster carts as well as Toter round 32- and 44-gallon cans, and most competitive barrel-style containers with side lift handles. This lifter dumps into stationary and self-contained compactors, front or side load containers, roll-off open top containers, through-the-wall compactor chutes, etc.

MODEL#	Dimensions	Load Rating	Dump Height	Power Supply
3081-ST-1000	53.50" x 35.00" x 43.00"	350 lbs.	68.0" – 84.0"	115/230/480V single phase and three phase, 1 - 3HP



Saddle (3081 SERIES ST)

The Saddle lifter dumps Toter 32/48/64/96 gallon two-wheel and caster carts. This lifter dumps into stationary and self-contained compactors, front or side load containers, roll-off open top containers, through-the-wall compactor chutes, etc.

MODEL#	Dimensions	Load Rating	Dump Height	Power Supply
3081-ST-5000	N/A	350 lbs.	68.0" – 84.0"	115/230/480V single phase and three phase, 1 - 3HP



Candy Cane (3064 SERIES ST)

The Candy Cane lifter has the ability to dump high (120 inches) and deep into a hopper. This lifter comes in handy for those who deal with bulk amounts of waste and materials. Works with Toter two-wheel carts and caster carts.

MODEL#	Dimensions	Load Rating	Dump Height	Power Supply
3081-ST-5000	N/A	350 lbs.	72.0" – 120.0"	208/230/460V single or three phase, 2 HP & 3 HP

All lifter inquiries require a Lifter Selection Checklist, as they are built to custom specifications.

LIFTER SOLUTIONS



Universal / Pan Lifter / Box Dumper (3078 SERIES ST)

Available as a fork or pan lifter. These double-cylinder units can dump from a 32-gallon cart to a 4 cubic yard container. Do you have a non-standard container? We will customize this unit to fit your needs.

MODEL#	Dimensions	Load Rating	Dump Height	Power Supply
3078-LP-5000	N/A	2,500 lbs.	30.0"	208/230/460/600V single or three phase, 5 HP
3078-XX-6000	N/A	2,500 lbs.	48.0" – 70.0"	208/230/460/600V single or three phase, 5 HP
3078-BD-7000	N/A	2,500 lbs.	48.0" – 65.0"	208/230/460/600V single or three phase, 5 HP



Twin Post High Lift (3077 SERIES ST)

Our most versatile unit is available as a fork or pan lifter. Customizable to dump two units at once, it is also our highest reaching lifter going from 4 feet to 20 feet. This unique unit can dump from a 32 gallon cart to a 4 cubic yard container. Do you have a non-standard container? We will customize this unit to fit your needs.

MODEL#	Dimensions	Load Rating	Dump Height	Power Supply
3077-00-3000	N/A	Up to 3,000 lbs.	48.0" – 240.0"	208/230/460/600V single or three phase, up to 10 HP



Global Dumper (3065 CS SERIES ST)

The Global Dumper handles all ANSI Standard carts from 32 to 96 gallons. Works with two-wheel carts and caster carts.

MODEL#	Dimensions	Load Rating	Dump Height	Power Supply
3065-CS ST	N/A	350 lbs.	48.0"	208/230/460/600V single or three phase, 5 HP

All lifter inquiries require a Lifter Selection Checklist, as they are built to custom specifications.

LIFTER SOLUTIONS

LIFTER SAFETY SOLUTIONS AND ACCESSORIES

Our base-lifters are designed with safety and ergonomics in mind. They're customizable to meet your requirements, from food grade to outdoor-use. We build lifters to suit your needs.

Options

- Limit switches
- Flashing light w/horn
- Safety cages
- Auto-lock system
- Palm buttons
- Timers
- Floor stop
- Manual hand-valve controls
- Electrical push-button controls
- PLC controls (programmable logic controller)
- Key locked controls
- Multi-color paint palette
- Stainless steel food-grade units
- Horsepower ranges from 1HP to 10HP
- Voltage ranges from 12V to 600V
- Single-phase or three phase

Power Units and Controls



Operator Controls



Control Panel



Manual Valve Controls



Power units
Power units are available to fit your current electrical requirements from single to three phase, from 115 to 600 volts.



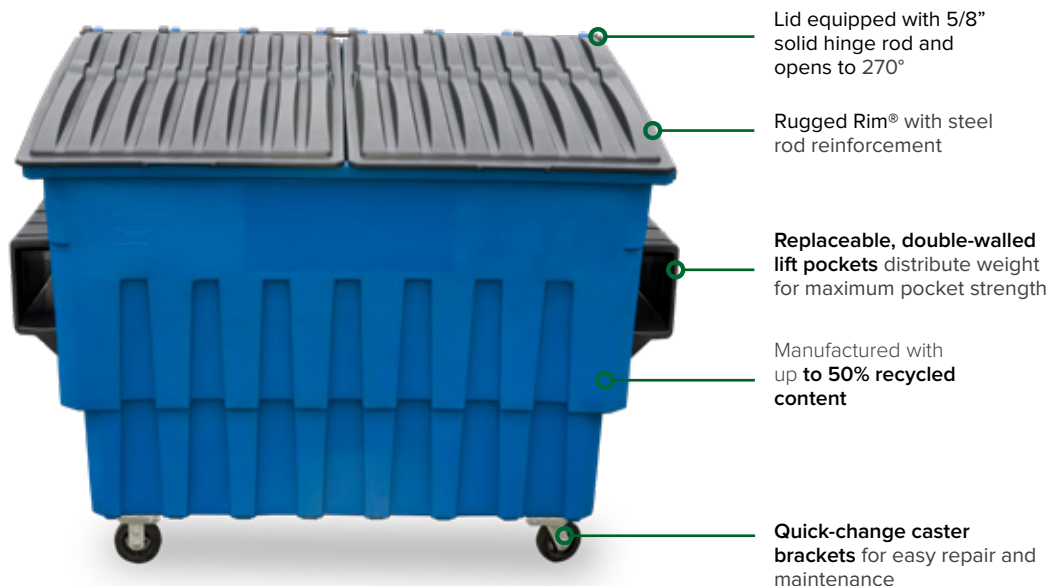
Batteries and Battery Box
All are shipped with a 12-volt power unit and battery. An optional 12-volt battery charger is available.



Auto-lock System
All auto-lock systems use cylinders to lift the unit in use, so the unit does not move during operation.

FL SERIES

- Can last up to 3 times longer than steel containers
- Quieter than steel containers; perfect for areas where noise is a concern
- Lighter weight than steel containers for easier maneuverability
- Container body will not rust so they are perfect for environments where corrosion is a concern



STACKABLE DESIGN SAVES ON SPACE

- Stackable when fully assembled
- Shipped unassembled for better truckload efficiency



MODEL#	Description	Dimensions	Load Rating	Weight	Unassembled		Assembled	
					Containers Per stack	53' t/l Quantity	Containers Per stack	53' t/l Quantity
FL020	2-cubic-yard FEL*	82.3" x 43.5" x 52.3"	1,000 lbs. / 453.6 kg	229 lbs.	5	80	3	45
FL030	3-cubic-yard FEL*	82.3" x 50.6" x 65.1"	1,500 lbs. / 680.4 kg	281 lbs.	4	64	2	24
FL040	4-cubic-yard FEL	82.3" x 60.0" x 63.1"	2,000 lbs. / 907.2 kg	314 lbs.	3	30	2	20

* Dimensions include casters.

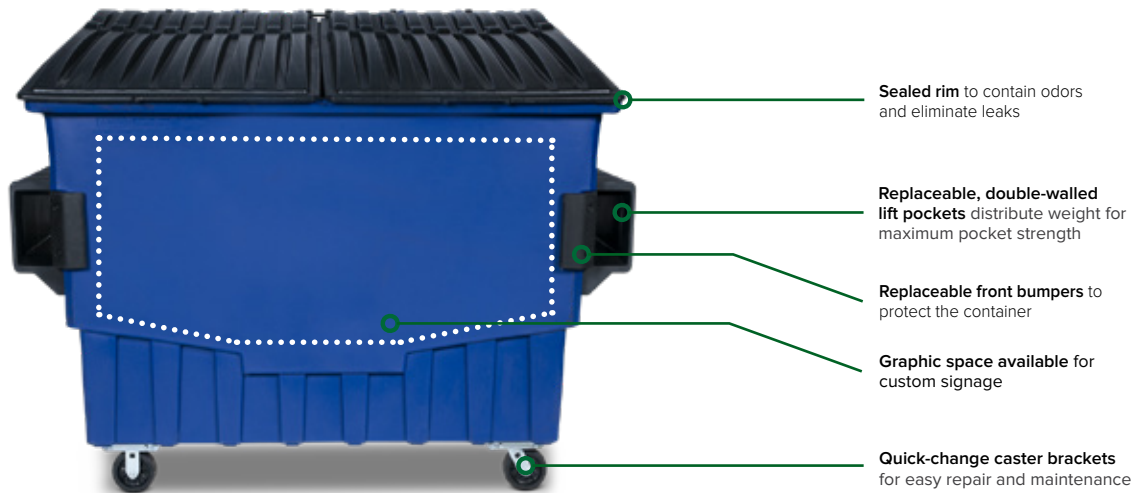
MODEL#	Post-Mold Graphic	Drain Plug	Lock Bar (Manual or Automatic)	No Casters	6" Standard Casters (2 Swivel, 2 Rigid)	6" Standard Casters (All Swivel)	6" HD Casters (2 Swivel, 2 Rigid or All Swivel)	8" Standard Casters (All Swivel)	Caster Mounting Pads Only
FR020	●	●	●	●	S	●	●	●	●
FR030	●	●	●	●	S	●	●	●	●
FR040	●	●	●	S	●	●	●	●	●

S = standard ● = optional

For color options, please refer to page 9.

FR SERIES

- Steel rod reinforcement and ribbed bottom wear chimes for enhanced durability
- Double-walled lift pockets to distribute weight for maximum pocket strength
- Integrated bumpers to protect the container for long life
- Graphic space available for custom signage



MODEL#	Description	Dimensions	Load Rating	Weight	Unassembled		Assembled	
					Containers Per stack	53' t/l Quantity	Containers Per stack	53' t/l Quantity
FL020	2-cubic-yard FEL*	82.3" x 38.0" x 41.8"	750 lbs. / 340.91 kg	192 lbs.	6	96	4	60
FL030	3-cubic-yard FEL*	82.3" x 43.1" x 52.8"	1,000 lbs. / 454.55 kg	231 lbs.	5	80	3	45
FL040	4-cubic-yard FEL	82.3" x 51.1" x 61.9"	1,500 lbs. / 681.8 kg	280 lbs.	4	64	2	24
FL030	3-cubic-yard FEL*	82.3" x 60.5" x 67.4"	2,000 lbs. / 909.1 kg	315 lbs.	3	30	2	20

*Dimensions include casters.

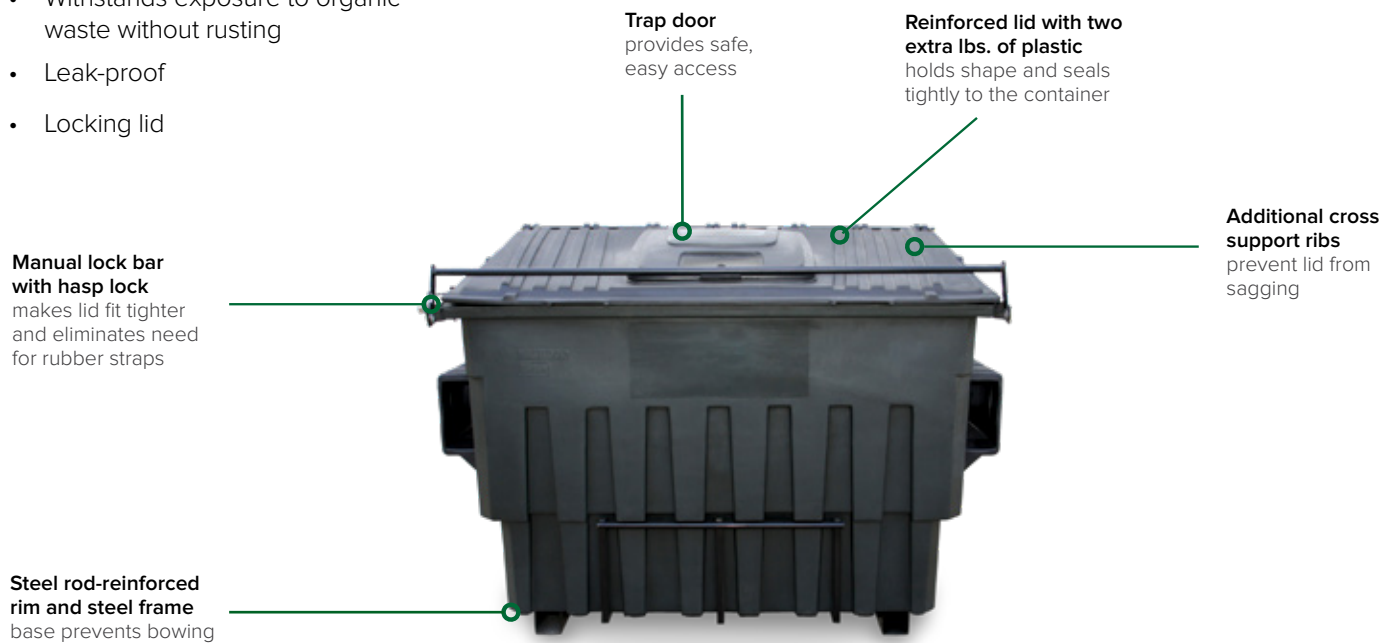
MODEL#	Post-Mold Graphic	Drain Plug	Lock Bar (Manual or Automatic)	No Casters	6" Standard Casters (2 Swivel, 2 Rigid)	6" Standard Casters (All Swivel)	6" HD Casters (2 Swivel, 2 Rigid or All Swivel)	8" Standard Casters (All Swivel)	Caster Mounting Pads Only	Bumpers
FR010	●	●	●	●	S	●	●	●	●	S
FR020	●	●	●	●	S	●	●	●	●	S
FR030	●	●	●	●	S	●	●	●	●	S
FR040	●	●	●	S	●	●	●	●	●	S

S = standard ● = optional



ORGANICS SERIES

- Specifically designed for heavy, wet organic waste
- Built-in drain plug for easy clean-out
- Withstands exposure to organic waste without rusting
- Leak-proof
- Locking lid



MODEL#	Post-Mold Graphic	Drain Plug	Lock Bar (Manual or Automatic)	No Casters	XHD Body With Steel Frame and Steel Runners	XHD Body With Steel Frame, 6" HD Casters, All Swivel, 2 Braking	XHD Body With Steel Frame, 6" HD Casters, 2 Swivel Braking, 2 Rigid	Plastic Lift Pockets	Steel Lift Pockets	Organic Single Lid With Trap Door
FL52C	●	●	●	—	—	S	●	S	—	—
FL53A	●	●	●	S	S	—	—	S	—	●
FL53B	●	●	●	S	S	—	—	—	S	●
FL53C	●	●	●	—	—	S	—	S	—	●
FL53D	●	●	●	—	—	S	—	—	S	●

S = standard ● = optional

For color options, please refer to page 9.

Unless otherwise stated, pictures, materials and container sizes indicated in this catalog (and related materials) are nominal sizes and representations. Actual volume, products and materials are subject to manufacturing and commercial variations and Toter's practices, and may vary from nominal sizes and materials. Please visit www.toter.com for our Terms and Conditions of Sale.

ACCESSORIES

Toter[®]
PRO

Built for Extremes[®]

CART LINERS AND POWERFRESH

Shield your garbage can from sticky messes with Toter Cart Liners, the first full-size bags made to fit all two-wheel garbage cans. Toter cart liners are designed to protect your can with built-in odor eliminators to combat smell. Simply place a new liner in your garbage can each week after they slip out easily into the garbage truck on trash day. The liners are available in 48, 64, and 96 gallon sizes.

- Available in 48, 64, and 96 gallon sizes
- Covers the inside of your cart to protect against sticky messes
- Contains a built-in odor eliminator
- Easily slips out and falls right into garbage truck on pick-up days
- Durable 75% recycled plastic material
- Designed to fit all garbage cans
- Manufactured in the USA
- Sold in packs of 10; Sold in cases of 8



Cart Liners

Part	Capacity	Fits	MIL	Qty. Per Case	Box Dimensions (L x W x H)	Bag Dimension (L x W x H)
*GB048-R8000	48 gallons	Up to 48 Gallons	2.0 mil	80	4.3" x 4.3" x 10.5"	35.0" x 10.0" x 54.0"
*GB064-R8000	64 gallons	Up to 64 Gallons	1.1 mil	80	3.5" x 3.5" x 11.0"	40.0" x 10.0" x 53.0"
*GB096-R8000	96 gallons	Up to 96 Gallons	1.1 mil	80	4.0" x 4.0" x 10.8"	39.0" x 18.0" x 65.0"

*Quickship

Toter PowerFesh™ Odor Eliminator is uniquely designed to fight tough garbage can odors around the clock with citronella and a fresh citrus scent. The .22 oz packet slides into a refillable housing to keep your garbage can smelling fresh for 30 days.

- Fights tough odors to maintain freshness of your garbage can
- Easily adheres to the inside of the garbage can lid
- Uniquely designed to fit any garbage can
- Citrus blast scent available in 60-day refillable packs

Part	Description	Qty. Per Pack	Box Dimensions (W x D x H)
*PFKIT- 00000	Housing and Refill	1	3.5" x 0.9" x 10.5"
*PFRF0-00000	Refill	2	2.6" x 0.4" x 2.8"
*PFKIT-8000	Housing and Refill	8	5.5" x 11.0" x 8.1"
*PFR0-15000	Refill	15	3.9" x 9.6" x 8.3"

*Quickship



PowerFresh™

